



SULLIVANS COVE APARTMENTS

SALAMANCA MOUNTAIN SIDE

Story

Situated behind the original sandstone warehouses on the famous Salamanca Place, home of Hobart's must-see markets, Salamanca Mountain Side Apartments are some of the best accommodation in Hobart. Each apartment is 2 bedroom and fitted out in a contemporary style, featuring glass, steel and blackwood. Salamanca Mountain Side Apartments feature two bedrooms, one bathroom, full sized gourmet kitchens and full sized fridge/freezer and views to Mount Wellington. Apartments have free broadband access and car parking.

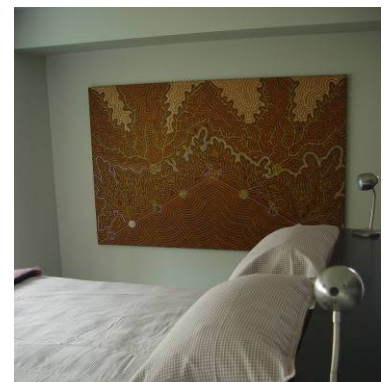
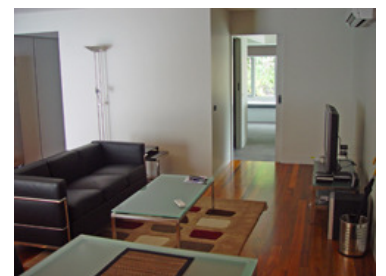
SALAMANCA MOUNTAIN SIDE WINS ARCHITECTURAL AWARD 2008!!!

Features

- 2 bedrooms (ideal for a couple, 2 couples or family of four)
- 1 bathroom
- Full sized gourmet kitchen with full sized fridge/freezer
- Balconies with BBQ
- Free broadband
- Free parking
- Large flat screen television with DVD player and in-house movie collection
- Please note that there are stairs to enter apartments
- All Salamanca Apartments have stair access only

Benefits

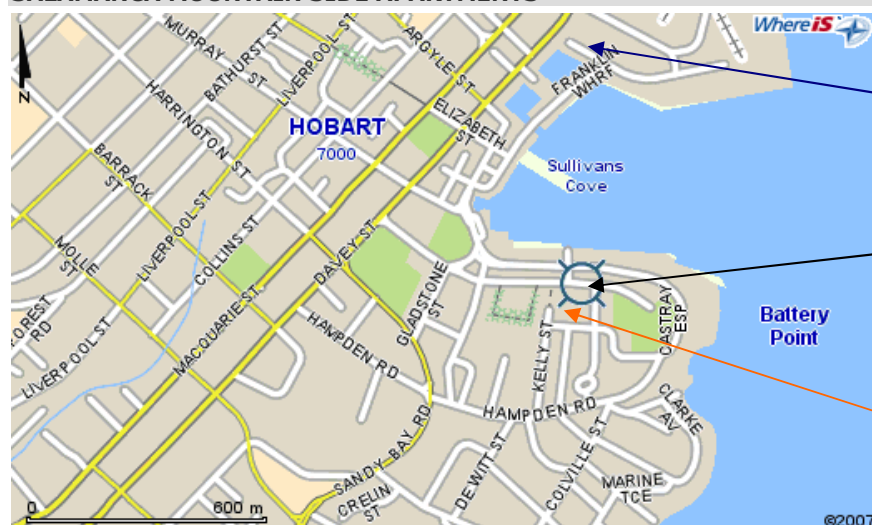
- Great location behind Salamanca Place
- Excellent value for money
- Spacious and comfortable for longer stays
- Short walk to city and waterfront



SALAMANCA MOUNTAIN SIDE

Location

SALAMANCA MOUNTAIN SIDE APARTMENTS



Sullivan's Cove Apartments Office located at 5/19a Hunter Street (ph 03 62345063).

Salamanca Mountain Side Apartments located at 85 Salamanca Place (entry to apartments from Kelly Street)

Parking for Salamanca Mountain Side Apartments. Enter from the end of Kelly St Battery Point.

Check In Instructions

Check-in between 2pm and 5pm and will occur at **5/19a Hunter St**. For Check Outside Reception Hours, please contact our Office on 03 6234 5063 or via email to stay@sullivanscoveapartments.com.au to obtain our After Hours Access Code. Credit card details will be required on check in. Check Out 1000hrs. Late checkouts can be arranged on request but cannot be guaranteed.

Office hour check-in is located at 5/19a Hunter in the IXL Courtyard behind the old IXL Jam factory on Hobart's waterfront. Look for the Sullivan's Cove Apartments signs from Hunter Street, we are located on the first floor above the Masterpiece Fine Art Gallery.

Arriving by car:

If coming from the airport by car take signs to Hobart City, after crossing Derwent Bridge keep in the left lane and take the left turn into Evans St at the traffic lights (just before the waterfront). Take the first right off Evans St into Hunter St. Drive almost to the end of Hunter St and park in front of the Drunken Admiral Restaurant. Check-in is located in the courtyard next to the Drunken Admiral Restaurant. Follow signs to Sullivan's Cove Apartments. Free off-street parking is available.

Arriving by taxi:

Ask your Taxi driver to take you to 19 Hunter St Hobart. Check-in is located in the courtyard next to the Drunken Admiral Restaurant. Follow signs to Sullivan's Cove Apartments.

After Hours, please tell you Taxi Driver to drop you off in 3 Evans Street Hobart.

Booking conditions

Rates are normally based on 2 people and extra people are charged at \$40.00 per person, per night. Please contact our office for the latest seasonal rates and special offers. Please note that minimum stay requirement apply over New Years Eve and some special events. Cots are available at \$15.00 per night.

Should you choose to book one of the accommodation options as mentioned above please forward Full Name, Address, Contact Details, Estimated Time of Arrival and Credit Card Number to guarantee the reservation. Cancellations more than 48 hours before arrival no fee, within 48 Hours of arrival first nights accommodation is the cancellation fee.