



SULLIVANS COVE APARTMENTS

IXL 2 BEDROOM PENTHOUSE

Story

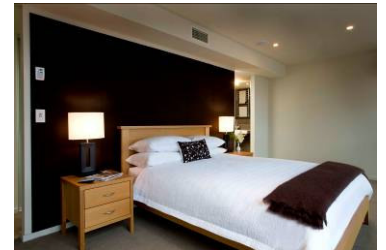
Overlooking the original sandstone jam factory that is now the Henry Jones Art Hotel, the IXL Apartments enjoy one of the most prestigious addresses in Hobart. This award winning apartment represents some of the finest accommodation Hobart has to offer. The Penthouse Apartment is a true penthouse – two bedroom, top floor with views over the finish line of the Sydney to Hobart Yacht Race combined with city and Mountain Views. This is the only accommodation in Hobart to offer all three views from one apartment. Apartments have complimentary broadband access and secure, under cover car parking.

Features

- 2 bedrooms (ideal for 2 adults and 2 children or 4 adults) – some 2 Bedroom Penthouse Apartments have an additional single bed in study/small bedroom
- 2 bathrooms, one with bath
- Full sized gourmet kitchen (includes coffee machine, dishwasher, full sized fridge and stove)
- Laundry facilities
- View over Hobart's Docks, Mount Wellington and the city
- Complimentary broadband
- Complimentary parking
- Huge flat screen television with DVD player
- Large living and dining space
- L'Occitane amenities
- Balcony with BBQ

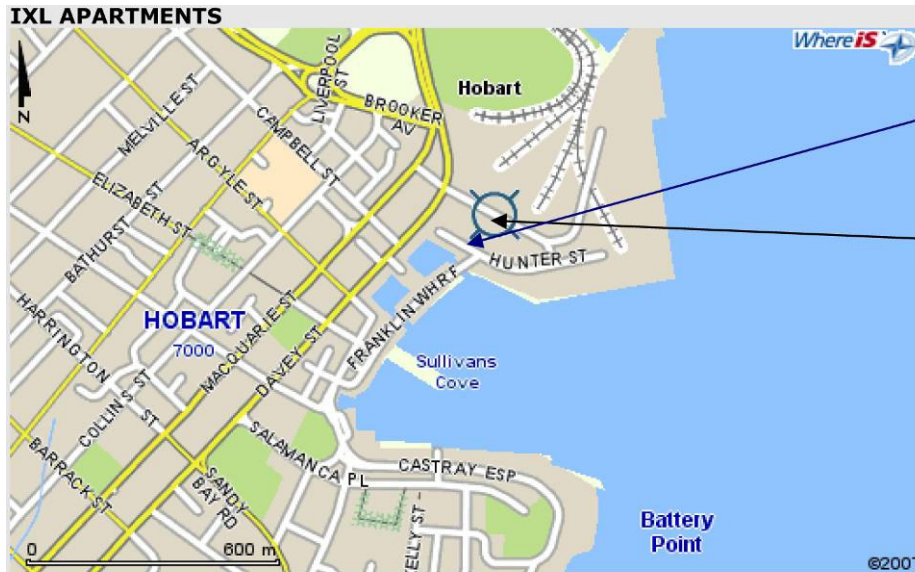
Benefits

- Great location overlooking Constitution Dock, Mount Wellington and city
- Excellent value for money for multiple couples or families
- Spacious and comfortable for longer stays
- Short walk to city and waterfront
- Stay in a multi-million dollar apartment for your next holiday!



IXL 2 BEDROOM PENTHOUSE

Location



Sullivan's Cove Apartments Office located at 5/19a Hunter Street (ph 03 62345063).

IXL Apartments located at 3 Evans Street.

Parking for IXL Apartments is off Evans Street. You will need to collect a magnetic pass from Sullivan's Cove Apartments Office at 5/19a Hunter Street (ph 03 62345063).

Check In Instructions

Check-in time is between 2PM and 5PM and the SCA office is located at **5/19a Hunter St**. For Check-in outside of reception hours please contact our office on 03 6234 5063 or via email to stay@sullivanscoveapartments.com.au to obtain our after hours check-in instructions. Credit card details will be required on check in. Check-out is at 110AM.

Our office is located at 5/19a Hunter St, in the IXL Courtyard behind the old IXL Jam Factory on Hobart's waterfront. Look for the Sullivan's Cove Apartments signs from Hunter Street, we are located on the first floor above the Masterpiece Fine Art Gallery.

Arriving by car:

If coming from the airport by car follow signs to Hobart City, after crossing the Tasman Bridge stay in the left lane and take the left turn into Evans St at the traffic lights (just before the waterfront). Take the first right off Evans St into Hunter St. Drive almost to the end of Hunter St and park in front of the Drunken Admiral Restaurant. Check-in is located in the courtyard next to the Drunken Admiral Restaurant. Follow signs to Sullivan's Cove Apartments. Free off-street parking is available.

Arriving by taxi:

Ask your taxi driver to take you to 19 Hunter St Hobart. Check-in is located in the courtyard behind the Drunken Admiral Restaurant and can be accessed through the walkway which has a sign above it for IXL Courtyard. Follow signs to Sullivan's Cove Apartments.

After Hours, please tell your taxi driver to drop you off at 3 Evans Street Hobart.

Booking conditions

Rates are normally based on 2 people and extra people are charged at \$40.00 per person, per night. Please contact our office for the latest seasonal rates and special offers. Please note that minimum stay requirements apply over New Years Eve and some special events. Cots are available at \$15.00 per night.

Should you choose to book one of the accommodation options as mentioned above please forward Full Name, Address, Contact Details, Estimated Time of Arrival and Credit Card Number to guarantee the reservation. Cancellations more than 48 hours before arrival incur no fee, within 48 Hours of arrival first night's accommodation will be charged as the cancellation fee.

IXL 2 BEDROOM PENTHOUSE

UPPER LEVEL



LOWER LEVEL

